



Program & Portfolio Management

Drive program, portfolio and project results from the top down

PowerSteering by Upland Software enables powerful, scalable and uniquely flexible top-down program and portfolio management without requiring granular task and resource tracking, making it a great fit for IT, product development, and business or enterprise PMOs.

It is a cloud-based application that combines the robust PPM functionality demanded by global organizations with the cost and speed benefits of the cloud, and provides class-leading analytic and financial tracking capabilities.

Benefits

More than the product footprint, it is PowerSteering's unmatched combination of flexibility, ease-of-use and ease-of-deployment that makes it a leading PPM solution. PowerSteering's flexibility and "Enterprise Cloud" delivery model helps overcome change management challenges by enabling:

- **Rapid Deployment** – Customers see value within weeks
- **Phased Roll-out** – Start with a pilot for select set of processes or users, then refine and expand
- **Role-based Access** – Keeps users focused on their high-value tasks
- **"Just Right" Capability** – Functionality configured to match your process maturity and readiness
- **Simple Configuration** – Intuitive configuration to make change easy
- **Frequent, Seamless Upgrades** – The cloud means you always have access to the latest product capabilities
- **Enterprise Scalability** – As a PMO grows, PowerSteering can be extended from tens to thousands of users

"PowerSteering has brought unprecedented transparency, accountability and oversight to the Highways Agency by providing reliable and accurate information to all interested stakeholders."

— Paul Williamson, Major
Projects Finance Director,
UK Highways Agency

The Upland Product Family

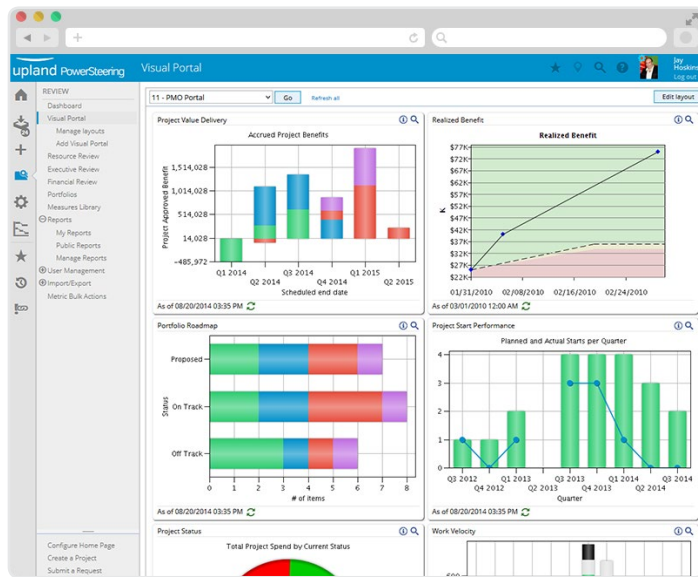


Automating the flow of work, connecting people through technology and bringing visibility to all aspects of the organization.

Our family of products helps teams run their operations smoothly, adapt to change quickly and achieve more every day. Each product is built with a specific need in mind. See what you can do with Upland.

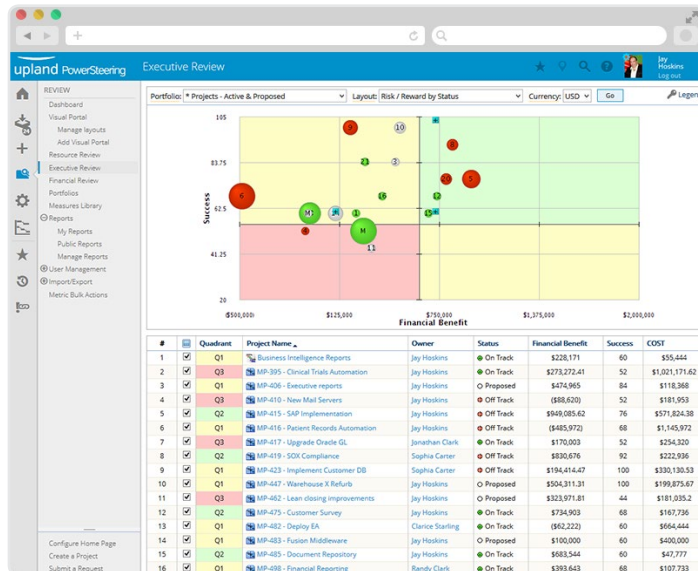
Visual View of Complete Portfolio

Obtain top-down visibility into projects, work and investment.



Evaluate New Investment Opportunities

Prioritize demand against any custom criteria and assess against in-flight projects.

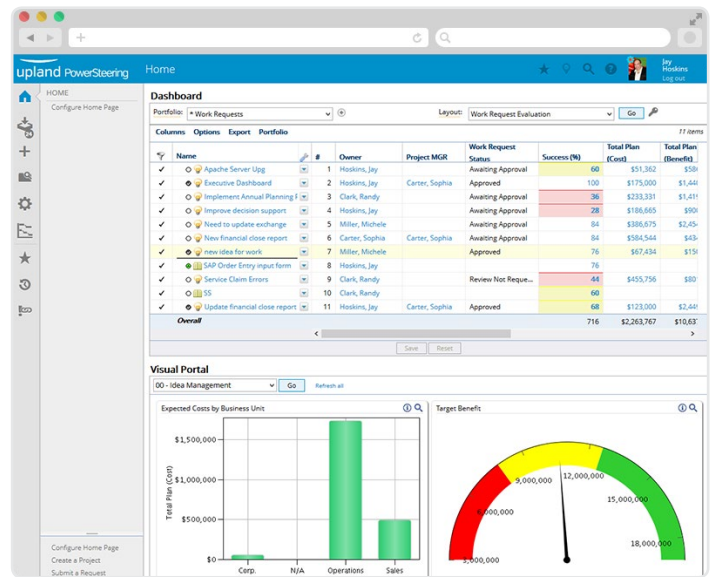


About Upland Software

Upland is a leading provider of cloud-based enterprise work management software. With more than 1,200 enterprise customers around the globe, and over 200,000 users, Upland helps teams in IT, marketing, finance, professional services and process excellence run their operations smoothly, adapt to change quickly and achieve better results every day. Contact us at 855-944-PLAN or info@uplandsoftware.com.

Decision-Maker's Dashboard

Capture ideas and work requests, and route them to the right queues for review and approval.



Resource Management

Manage schedules, dependencies and work breakdown while factoring in resource availability.

