

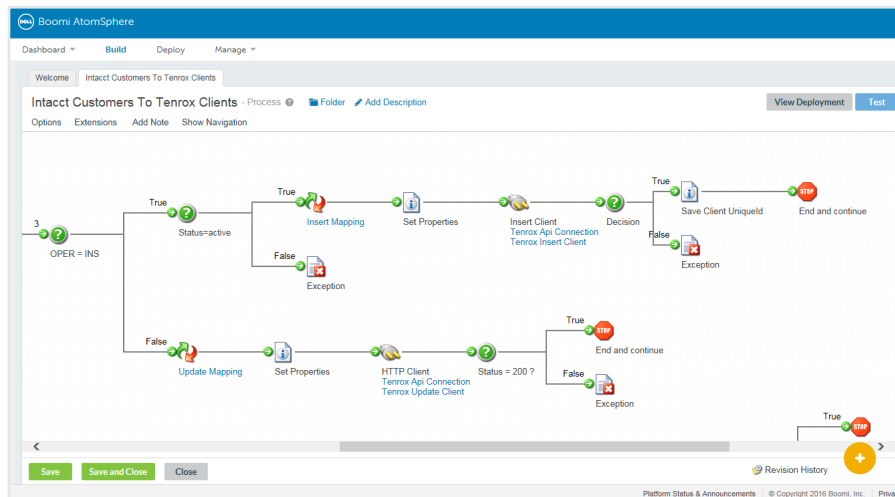
Upland Integration Manager Powered by Dell Boomi

Streamline business processes and reduce data entry

Upland's Integration Manager is available with Tenrox and allows exchanging data to and from multiple systems. The real-time, fully automated data flow empowers an enterprise's workforce by avoiding costly errors associated with manual data entry.

Organizations can easily configure the integration points to match their business needs. All process logic and data mappings are contained within the Upland Integration Manager and can be altered at any time through an intuitive user interface.

Users can focus on managing the projects and data they are working on while relying on the integrations working behind the scenes.



Integrations Have Never Been Easier

- Drag and drop your field mappings to connect your integrated systems
- Run functions to apply formatting or business logic within your mapping
- Mappings can be modified at any point to adjust for new requirements

Why Upland Integration Manager?

- **Configurable Mappings**
Each integration can be configured to exchange data for the entities and fields important to your organization.
- **Automated Integration**
Run your imports and exports on a schedule based on criteria, eliminating the need for manual triggers.
- **Named Leader by Industry Analysts**
Gartner has named Dell Boomi a leading enterprise integration platform for 3 years running.
- **Intuitive Interface**
Everything is handled through one, easy-to-use graphical interface.



Upland Software provides Cloud Solutions across the enterprise enabling amazing customer outcomes in:

- + PROJECT & IT MANAGEMENT
- + WORKFLOW AUTOMATION
- + DIGITAL ENGAGEMENT

Integration Manager in Use

Focus on managing the business and not the systems. Have your business applications communicate with each other so your project team has access to information regardless of their preferred tool.

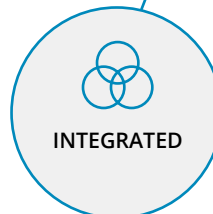
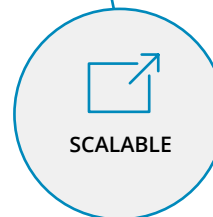
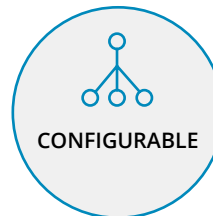
Integration: Day in the Life

Meet Mark Landry

Mark works for a major software company as the Director of IT. He maintains the systems and business processes that are used within his company.

Mark needs to modernize the inputs to these systems in order to minimize costs and errors related to manual data entry. In addition, he needs the ability to support both planned and unplanned change management, often with little to no budget available.

In using the Upland Integration Manager, all his systems are automatically synchronized using the logic and mappings he defined. As well, if ever a process is modified Mark can adjust the integrations from a graphical user interface without needing to involve expensive and unbudgeted



Functionality Checklist

- ✓ **User interface configuration for data mapping**
- ✓ **On-demand or scheduled integrations**
- ✓ **Access to Boomi's pre-configured library which supports integrations with a variety of 3rd party tools and Upland products**

Getting Started

Upland Integration Manager for Tenrox is available as an annually priced add-on to your existing Tenrox solution.

For details, contact us at boomi@uplandsoftware.com

About Upland Software

Upland Software (Nasdaq: UPLD) is a leading provider of cloud-based Enterprise Work Management software. Our family of applications enables users to manage their projects, professional workforce and IT investments, automate document-intensive business processes and effectively engage with their customers, prospects and community via the web and mobile technologies. With 2,000 customers and over 235,000 users around the world, Upland Software solutions help customers run their operations smoothly, adapt to change quickly, and achieve better results every day. To learn more, visit uplandsoftware.com.